



I-PICK
868 MHz RFID Handheld
Software Operation Manual

iDTRONIC GmbH
Donnersbergweg 1
67059 Ludwigshafen
Germany/Deutschland

Phone: +49 621 6690094-0
Fax: +49 621 6690094-9
E-Mail: info@idtronic.de
Web: idtronic-rfid.com

Issue 0.1
– 18. February 2016 –

Subject to alteration without prior notice.
© Copyright iDTRONIC GmbH 2016
Printed in Germany

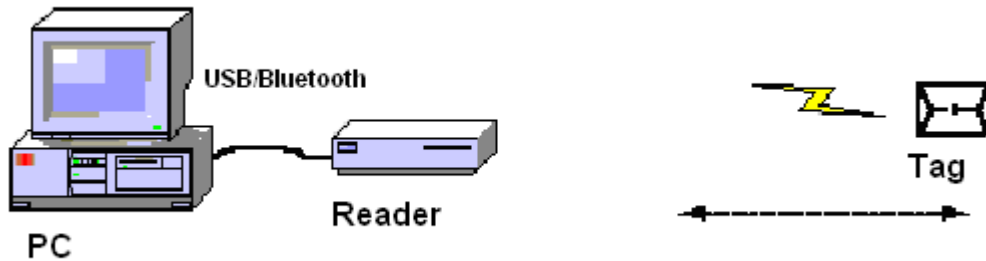
Contents

1	Software Operation.....	4
1.1	Set Up Test System	4
1.2	Run the test software	4
1.3	Serial port connection.....	4
1.4	Get time from handheld	6
1.5	Set time.....	6
1.6	Download/Erase Data From the Handheld.....	6
1.7	List handheld operation	7
1.8	Exit Program	10
2	USB connection	11
2.1	Install the USB driver	11
2.2	USB Drive checkup	12
2.3	Test	12
2.4	USB connection.....	12
3	Bluetooth connection.....	14
3.1	Bluetooth search.....	14
3.2	Bluetooth pairing.....	15
3.3	Bluetooth password.....	15
3.4	Get Bluetooth serial port	16
3.5	Bluetooth signal test	17
3.6	Test	17
4	Appendix.....	18
4.1	Document Revisions	18

1 Software Operation

1.1 Set Up Test System

Connecting the equipment as illustrated below, structure a simple I-PICK reader testing system in the studio:

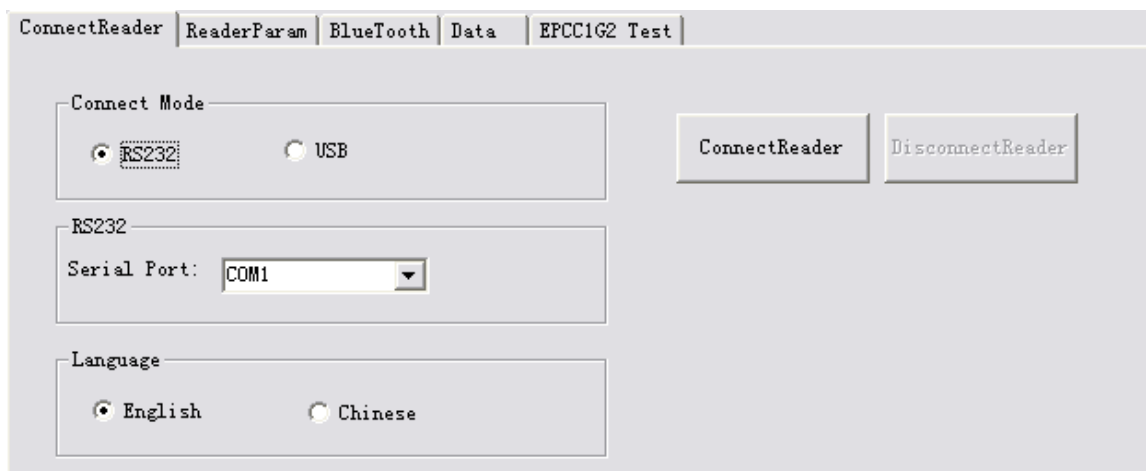


Connect the Handheld to PC through the USB.

Run the demo software of the reader on your PC, setting reader index and operate reader as below.

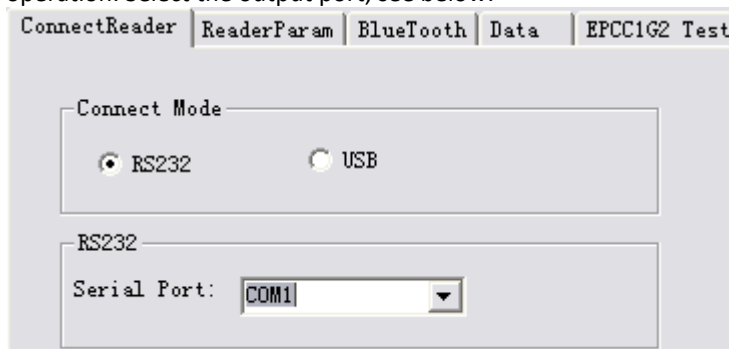
1.2 Run the test software

The Windows version of the demo software needs to be run on Microsoft Windows XP or higher.

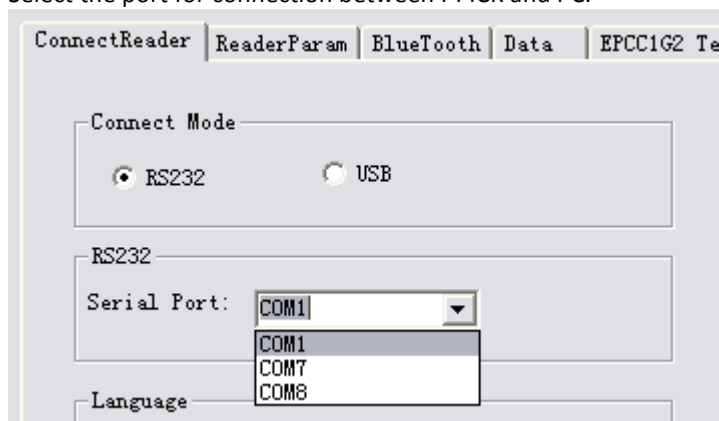


1.3 Serial port connection

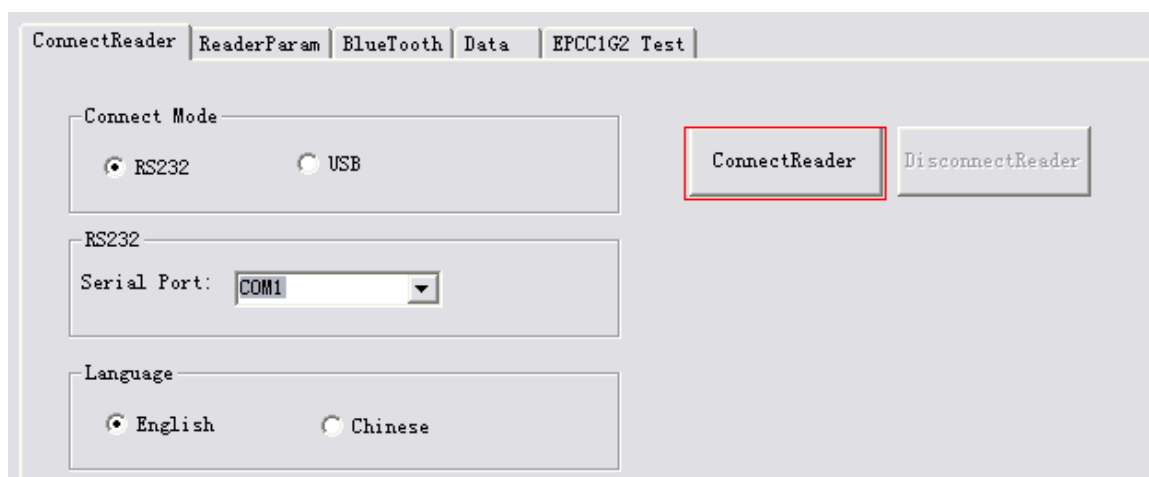
PC and I-PICK communicate by serial port RS232. User need to do initialized settings through a serial port on first operation. Select the output port, see below:



Select the port for connection between I-PICK and PC.



Click [Connect Reader] button to establish the connection.



In case the operation was successful, this dialog appears.



If the I-PICK can't connect to PC through the USB, or the selected serial port is wrong, the connection will fail.

1.4 Get time from handheld

Click [Get Time] to get the current time from the handheld. The date and time is shown in the text box below [SetTime]:

SetTime

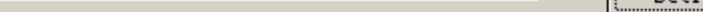
2014-09-24 16:32:39

GetTime

SetTime

1.5 Set time

Type in the desired date and time. Click [Set Time] to program it into the handheld.



The screenshot shows a dialog box titled "SetTime". Inside the dialog, there is a green rectangular area containing the text "Time setting success!". To the right of this area are two buttons: "GetTime" and "SetTime". The "SetTime" button is highlighted with a dashed border, indicating it is the active or selected button.

1.6 Download/Erase Data From the Handheld

Step 1

Type in [Start Time] and [End Time] in the input boxes.

The screenshot shows the "Data" tab of the "EPCC1G2 Test" application. At the top are tabs for "ConnectReader", "ReaderParam", "BlueTooth", "Data", and "EPCC1G2 Test". Below the tabs is a "Download" section containing a "Start Time" field set to "2014-09-01 00:00:00", an "End Time" field set to "2014-09-24 23:59:59", and two buttons labeled "DownLoad" and "Delete". A checkbox labeled "Whether to read all the records" is checked. The main area features a table with five columns: "NO.", "Date", "EPC", "TID", and "USER". The table body is currently empty. A scrollbar is visible at the bottom of the window.

Step 2

Start with [Download]. Wait for the data transfer to finish. Click [Delete] to erase the data.

ConnectReader
ReaderParam
Bluetooth
Data
EPCC1G2 Test

Download

Start Time
2014-09-01 00:00:00
End Time
2014-09-24 23:59:59
Download
Delete

☐ Whether to read all the records

NO.	Date	EPC	TID	USER
1	2013-08-24 17:57:30	3005FB63AC1F3681EC880468		
2	2013-08-24 17:57:30	3005FB63AC1F3681EC880468		
3	2013-08-24 17:57:30	3005FB63AC1F3681EC880468		
4	2013-08-24 17:57:30	3005FB63AC1F3681EC880468		
5	2013-08-24 17:57:31	3005FB63AC1F3681EC880468		
6	2013-08-24 17:57:31	3005FB63AC1F3681EC880468		
7	2013-08-24 17:57:31	3005FB63AC1F3681EC880468		
8	2013-08-24 17:57:31	3005FB63AC1F3681EC880468		
9	2013-08-24 17:57:31	3005FB63AC1F3681EC880468		
10	2013-08-24 17:57:31	3005FB63AC1F3681EC880468		
11	2013-08-24 17:57:31	3005FB63AC1F3681EC880468		
12	2013-08-24 17:57:32	3005FB63AC1F3681EC880468		
13	2013-08-24 17:57:32	3005FB63AC1F3681EC880468		
14	2013-08-24 17:57:32	3005FB63AC1F3681EC880468		
15	2013-08-24 17:57:32	3005FB63AC1F3681EC880468		
16	2013-08-24 17:57:32	3005FB63AC1F3681EC880468		
17	2013-08-24 17:57:32	3005FB63AC1F3681EC880468		

1.7 List handheld operation

There are four list of handheld on storage operation: [GetName], [Delete Name], [Add Name], [Save Name] and [Delete Single Name]

[illegible]

Add Name

As below box, Fill the EPC you want (EPC hexadecimal digits need to be multiple of 4) in the input field below [List of Name] list , click [add].

[illegible]

Delete Name

Click on the list you want to delete, the list will turn blue, Press the top right of the "delete" button will remove the selected list

[illegible]

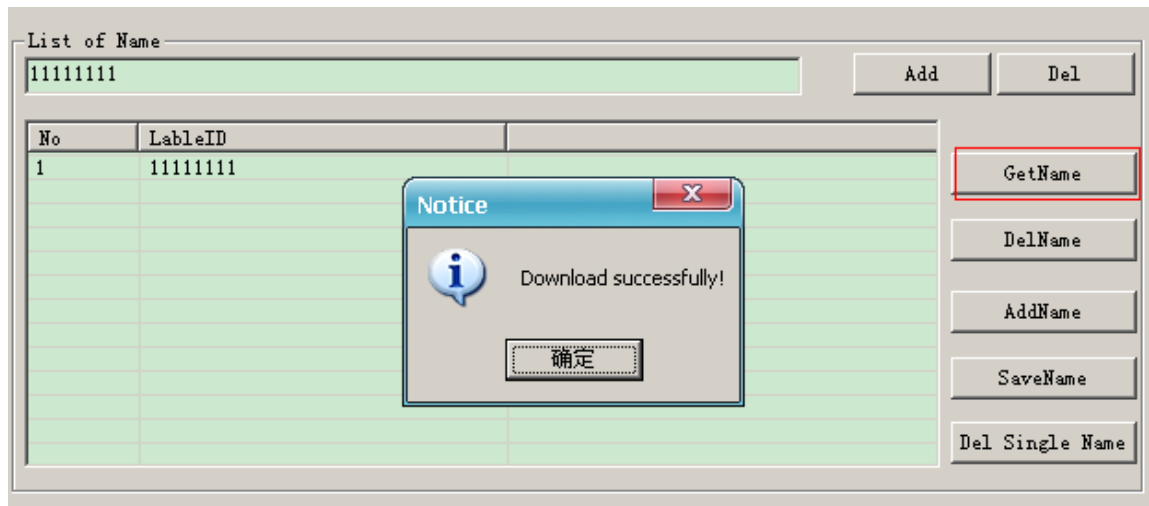
Add Name which stored in the handheld.

Click on the [Add Name] button ,will add list to handheld list. If success, popup the below clew box.



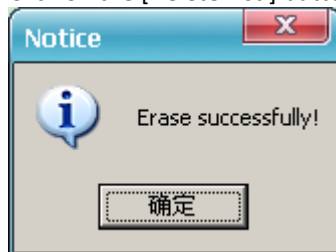
Get Name stored in the handheld

Press Get Name button, will read the list stored in the handheld, If success, prompted to download successfully ,and a list will be displayed in the list .



Delete the list stored in the handheld.

Click on the [Delete List] button, remove all data of list. If delete success, popup the following clew box.



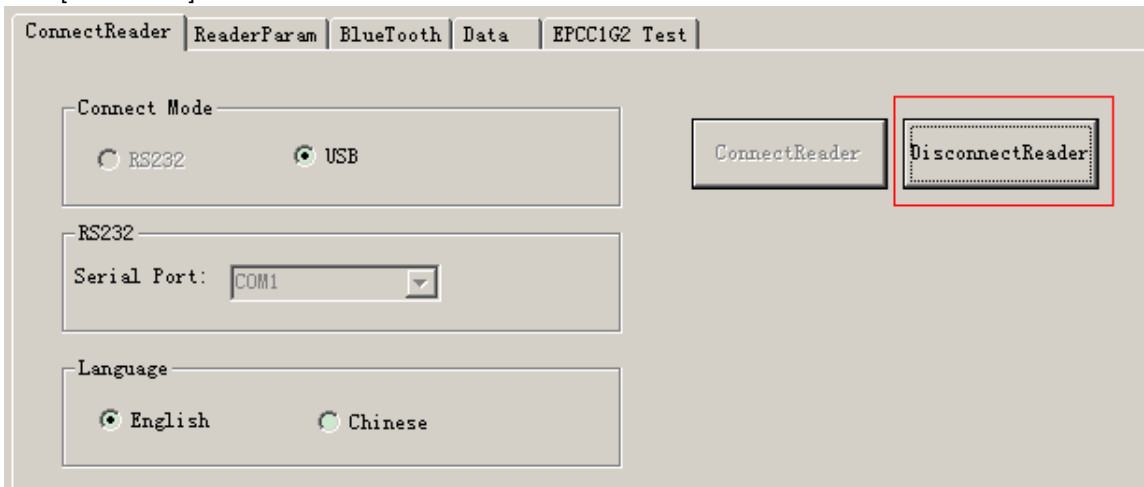
Notes

- Delete, save operation is only effective for the data in the list, will not delete the handheld data.
- Press keyboard [Ctrl] + mouse to select multiple list records; Press keyboard [Shift] + list of start and termination of the list of records can be continuously select multiple sequence records. Disconnect the data transmission before exit program
- Save data format is a comma separators of TXT format and CSV format.

1.8 Exit Program

Step 1

Click [Disconnect] button to disconnect the connection with the I-PICK:



Step 2

Click [Exit] to exit the demo software.

2 USB connection

This section describes how I-PICK connect PC via USB.

Before connect the handheld and PC, the first installation CD-ROM driver software, including: "BasicUSB_6124.exe" and "NET Framework 3.5".

Software should be installed in support Microsoft Windows XP or more than

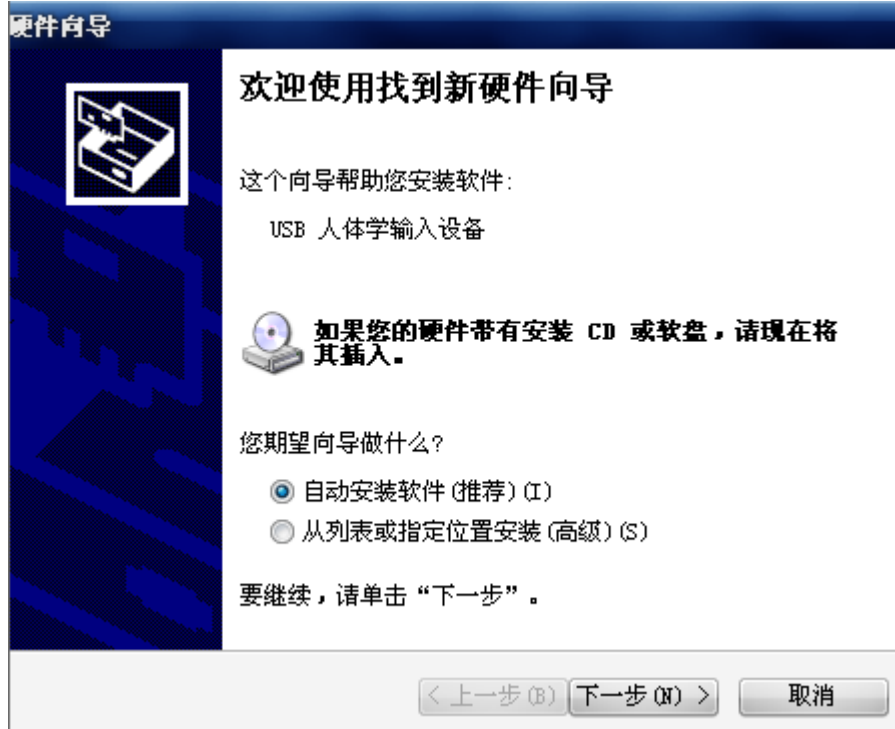
The handheld must be charged more than two hours in first using, Pls make sure the battery is with fully charged.

2.1 Install the USB driver

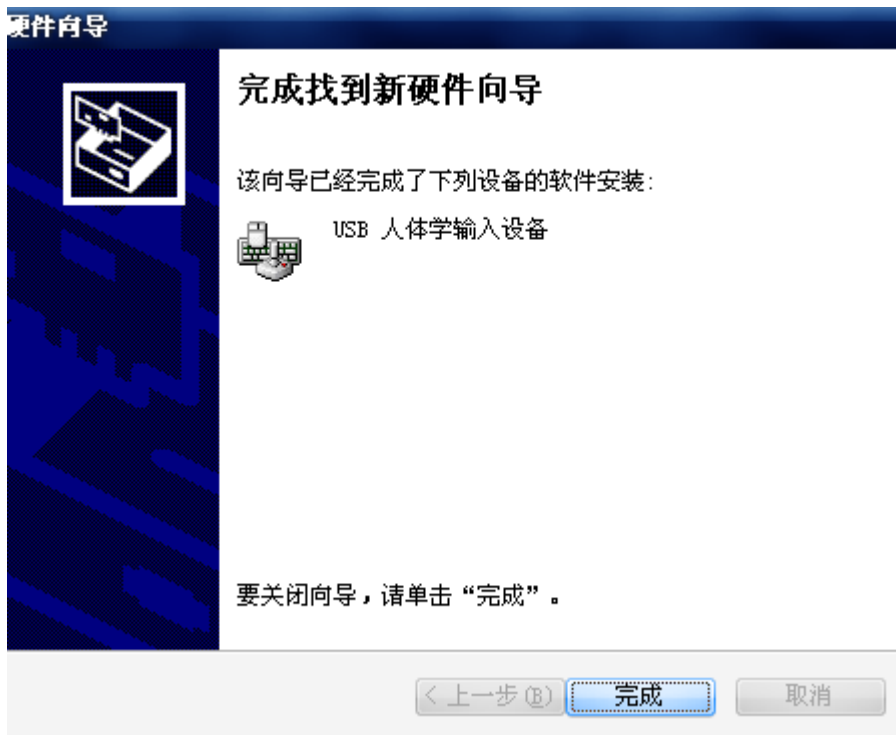
First connect: I-PICK connect PC by use USB line

Press the handheld "ON/OFF" button, boot the handheld.

found new hardware---choose [No.not this time], and click [Next]button, see below:



Choose "auto install application" and click on the "Next" button to enter Next step, see below:



Note: USB drive in "USB Driver", will address point to USB drive folder, PC will install the correct USB driver.

2.2 USB Drive checkup

To Check the USB driver if install to PC successful,

Click "My computer"- "Properties"- "Device Manager"- "human input device", there should be a particular USB serial interface to the success of the installation that connect, see below:



2.3 Test

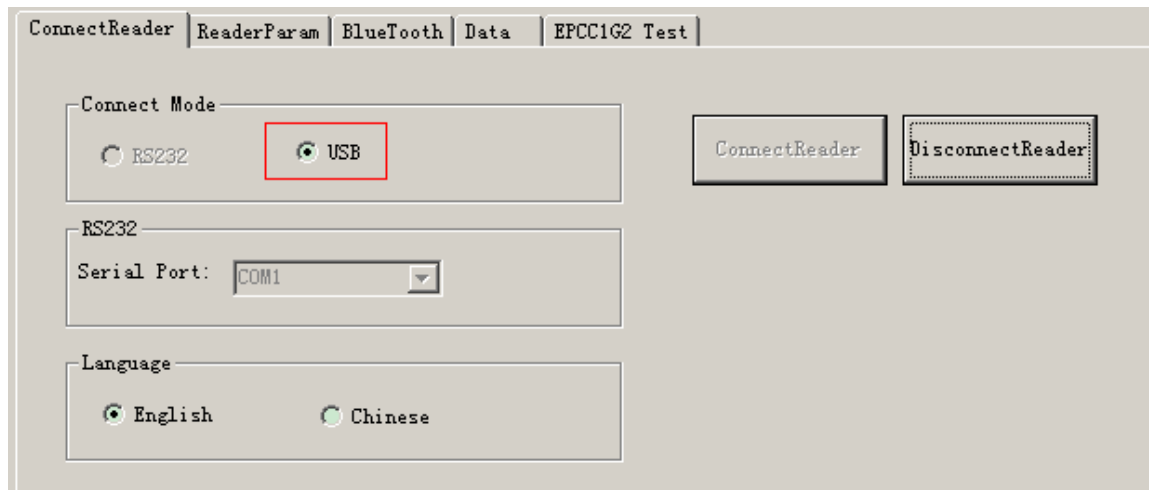
Open "User software", double click and run "VH75 Download.exe" file.

2.4 USB connection

PC transfer data via USB to the I-PICK.

Step 1

Select USB connection:



Step 2

Click on [connect reader].



In case the operation was successful, this dialog appears.



If the I-PICK can't connect to PC through the USB, or the selected serial port is wrong, the connection will fail.

3 Bluetooth connection

This section shows how I-PICK connect PC by Bluetooth.

The handheld must be charged more than two hours in first using, Pls make sure the battery is with fully charged.

Note:

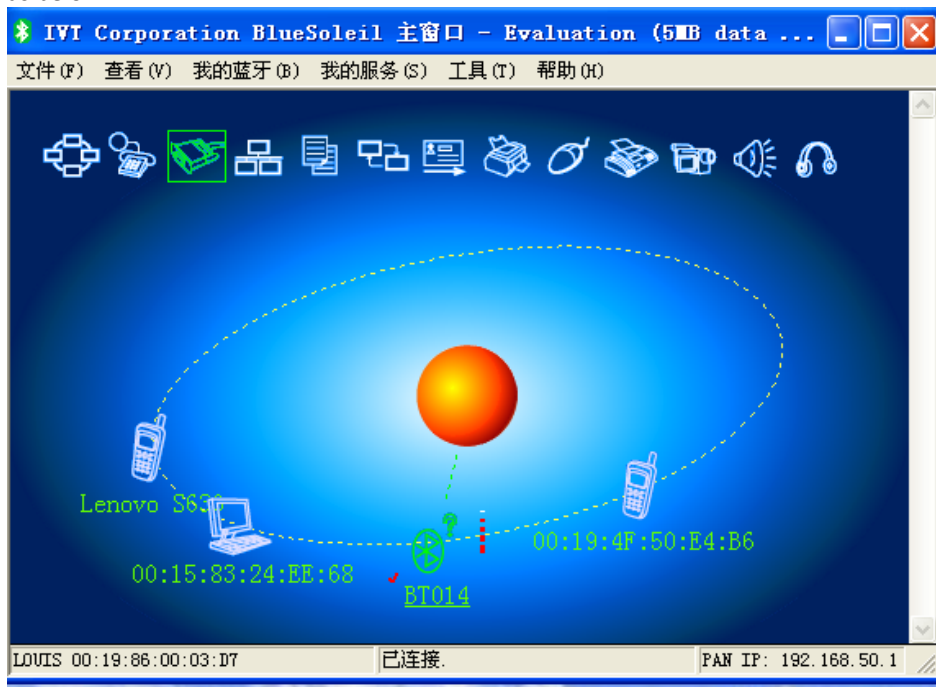
There are a variety of Bluetooth adapters in market, different Bluetooth adapter with Bluetooth device matching process is not the same. We took an example base on widely used Bluetooth adapter.

3.1 Bluetooth search

Press "ON/OFF" button on handheld, boot the handheld (without USB line)

Open Bluetooth management tools in PC; choose the "Bluetooth Device Discovery" from the menu.

Bluetooth adapter must be able to find the external Bluetooth devices, here called "BT014 (the name of the factory set)", as below:



蓝牙图例 2.0

3.2 Bluetooth pairing

Click “BT014”, choose “pair Device”, as below:



3.3 Bluetooth password

After Bluetooth pair there is a dialog box pop up to request input Bluetooth passkey. I-PICK default Bluetooth connection passKEY is "0000"



蓝牙图例 2.2

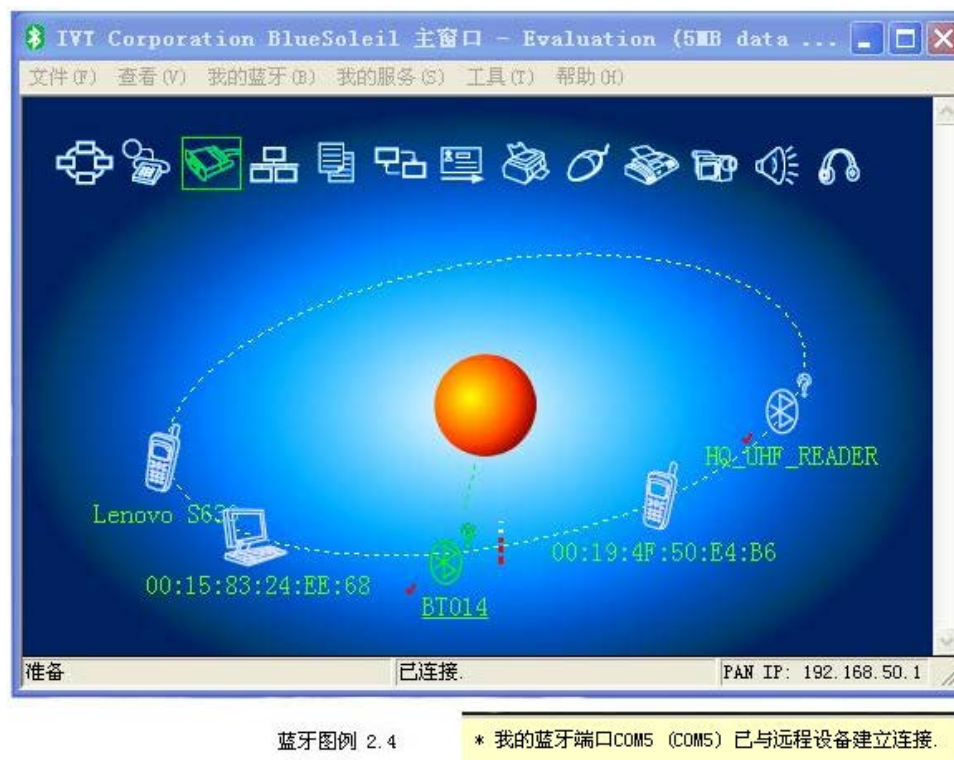
Note: The default bluetooth connection passKEY is "0000"

3.4 Get Bluetooth serial port

Bluetooth pairing success, right-click the "BT014" icon, select "connect"- "Bluetooth Serial Port Service", as below:



At this time, the Bluetooth management tools will automatically connect with I-PICK by Bluetooth adapter. The same time, the specific serial port service information in the system file shows the COM port number. As below:

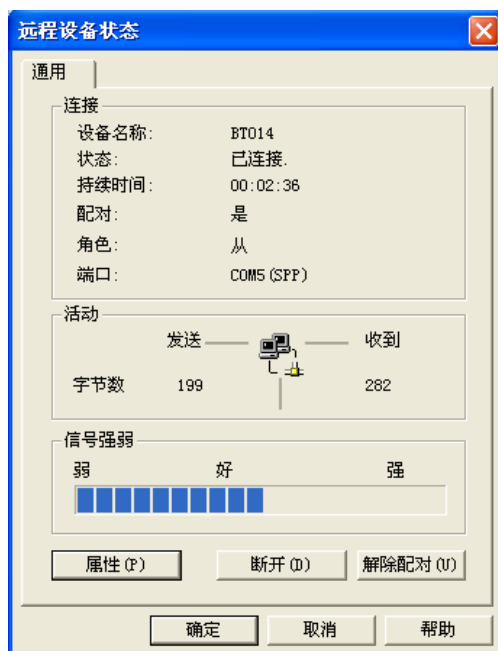


蓝牙图例 2.4

* 我的蓝牙端口COM5 (COM5) 已与远程设备建立连接.

3.5 Bluetooth signal test

Right click “BT014” icon, choose “Status”, it show Com port number and Bluetooth signal Intensity value, as below:



3.6 Test

Open “User software”, double click “VH75 dwnload.exe” file.

4 Appendix

4.1 Document Revisions

Date	Version	Description
18. Feb 2016	0.1	First draft